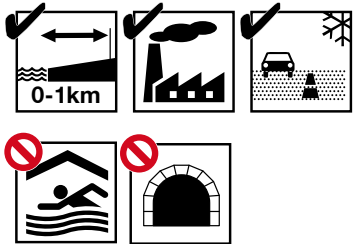


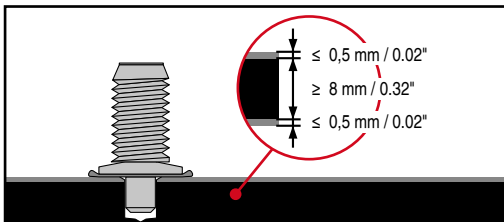


2203797-01.2025

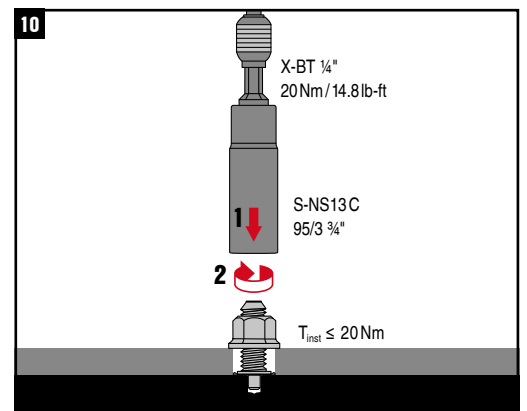
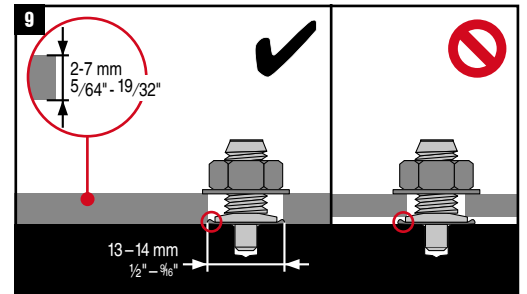
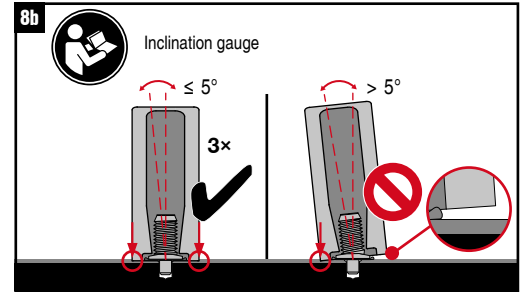
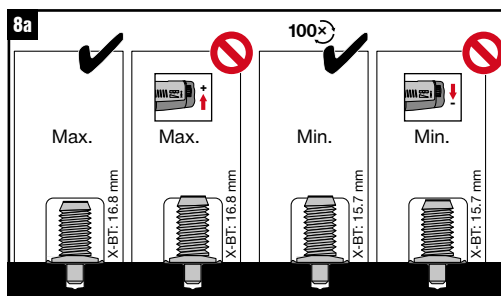
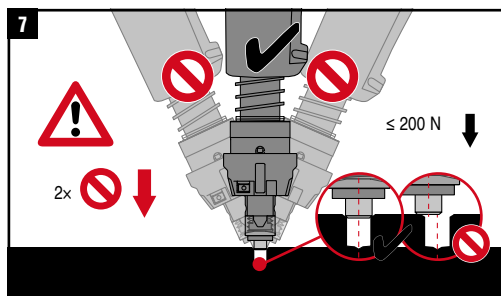
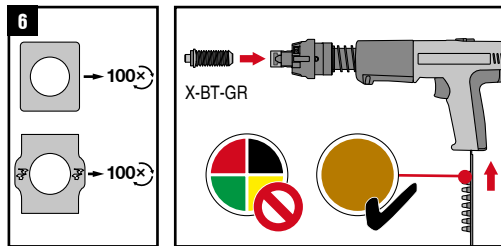
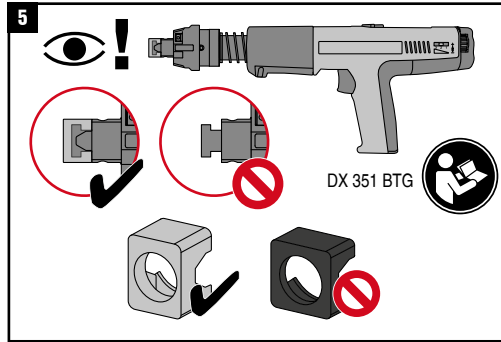
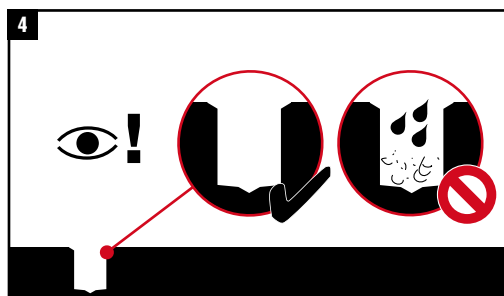
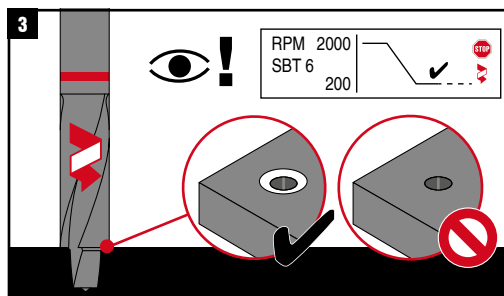
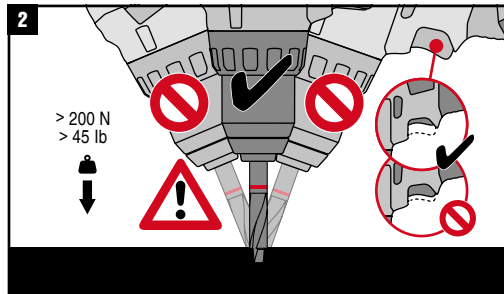
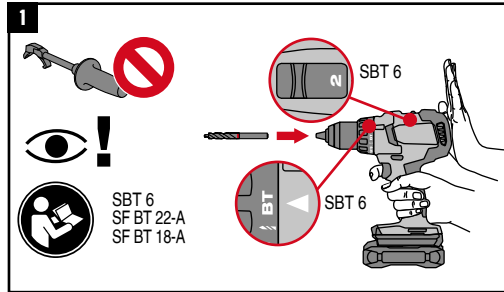
CE
21
Hilti AG LI-9494 Schaan
Hilti-DX-DoP-008
ETA-20/1042
EAD 333037-00-0602
0672
0672-CPR-0934
Threaded studs for connection of materials to structural steel



A4 316 Equivalent Corrosion Resistance



		Use with					
X-BT-GR M8/7 SN 8	✓	SBT 6 SF BT 22-A SF BT 18-A	DX 351 BTG	X-BT 1/4" 20Nm/14.8 ft lb	Flange Nut M8	S-NS 13 C 95/3 3/4"	X-IG BT M8



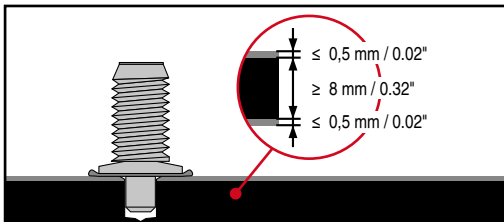
CE
21
Hilti AG LI-9494 Schaan
Hilti-DX-DoP-008
ETA-20/1042
EAD 333037-00-0602
0672
0672-CPR-0934
Threaded studs for connection of materials to structural steel



BUREAU VERITAS



A4 316
Equivalent Corrosion Resistance



		Use with					

