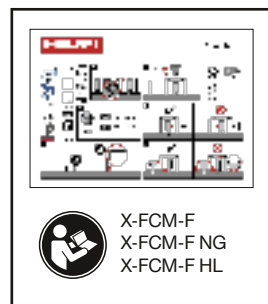
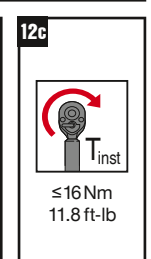
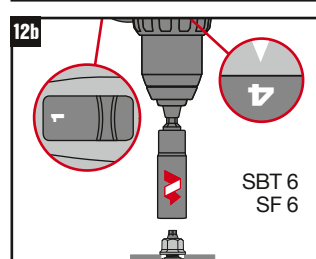
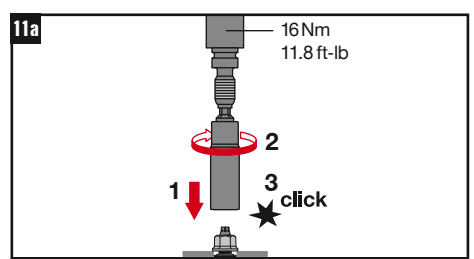
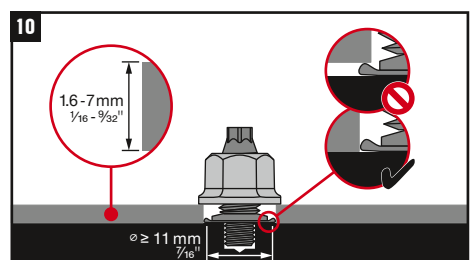
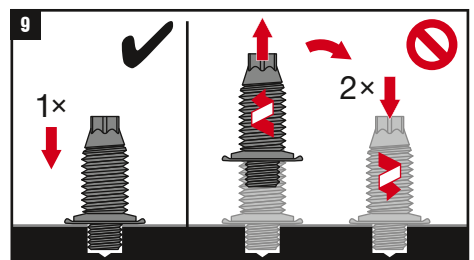
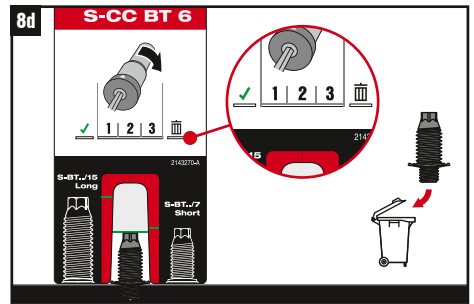
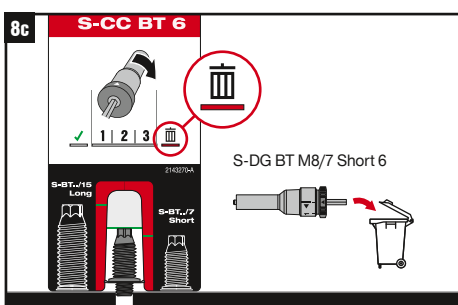
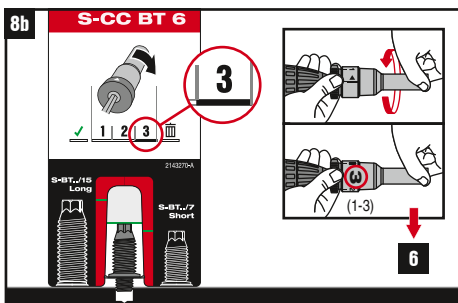
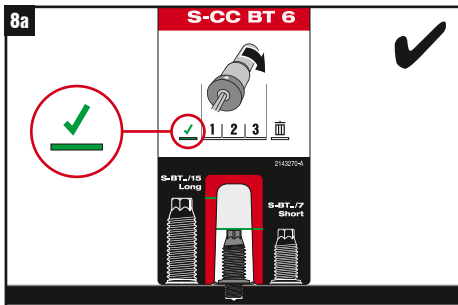
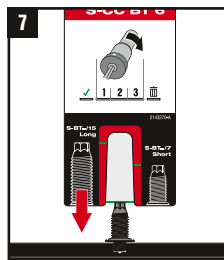
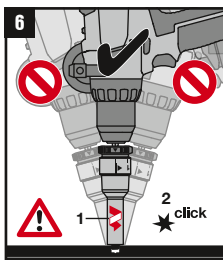
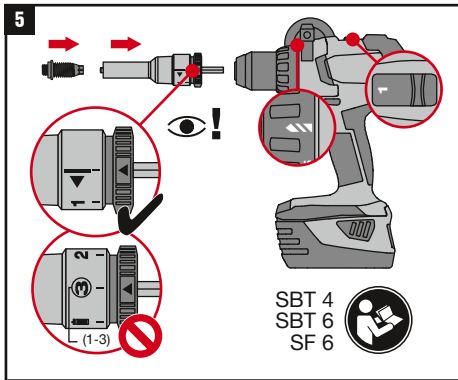
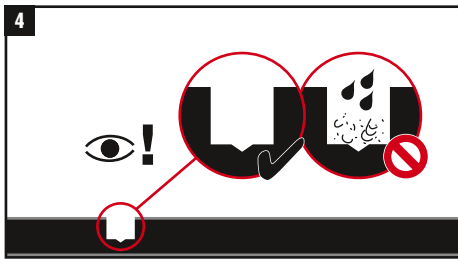
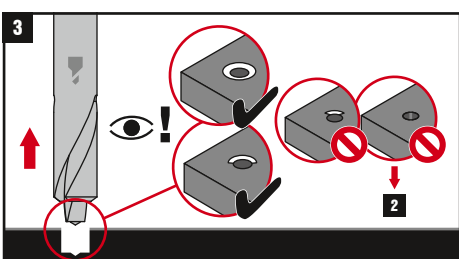
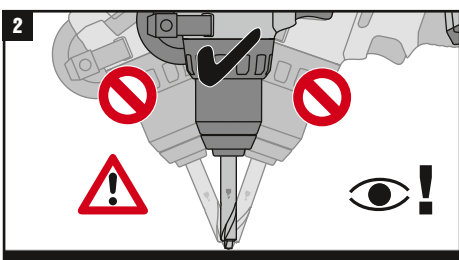
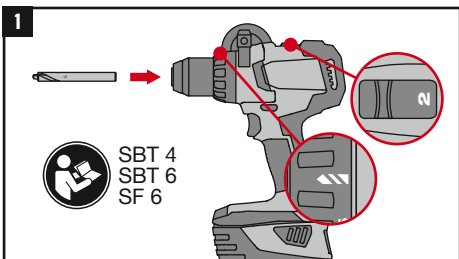
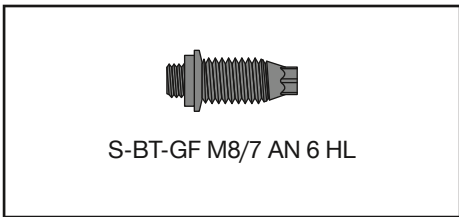
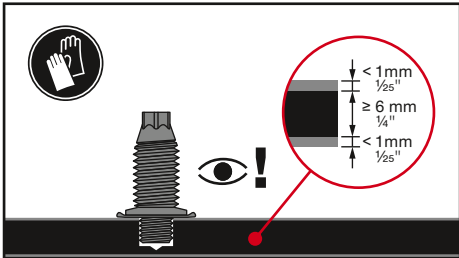
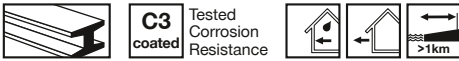


	SBT 4	SBT 6 SF 6
	TS-BT 5.3-95 S	
	S-DG BT M8/7 Short 6	
	Torque Tool S-BT 1/4" 16 Nm / 11.8 lb-ft	
	S-NS 13 C 95/3 3/4"	
	S-CC BT 6	



CE
23
Hilti Corporation, Feldkircherstrasse 100, FL-9494 Schaan, Liechtenstein
Hilti-SF-DoP-045
ETA-23/0001
EAD 333037-00-0602
0672-CPR
Threaded studs for connection of materials to structural steel and aluminium members
www.hilti.group



	SBT 6
	TS-BT 5.3-95 S
	S-SH BT M8
	Torque Tool S-BT 1/4" 16 Nm / 11.8 lb-ft
	S-NS 13 C 95/3 1/4"
	S-IC BT

